

Service description

Product: SP200	Service description no: 3112-S006	Ver: 1
-------------------	---	-----------

Symptom

Replace the plastic bearing.

Caused by

The pump has been used a lot, plastic bearings are worn out.

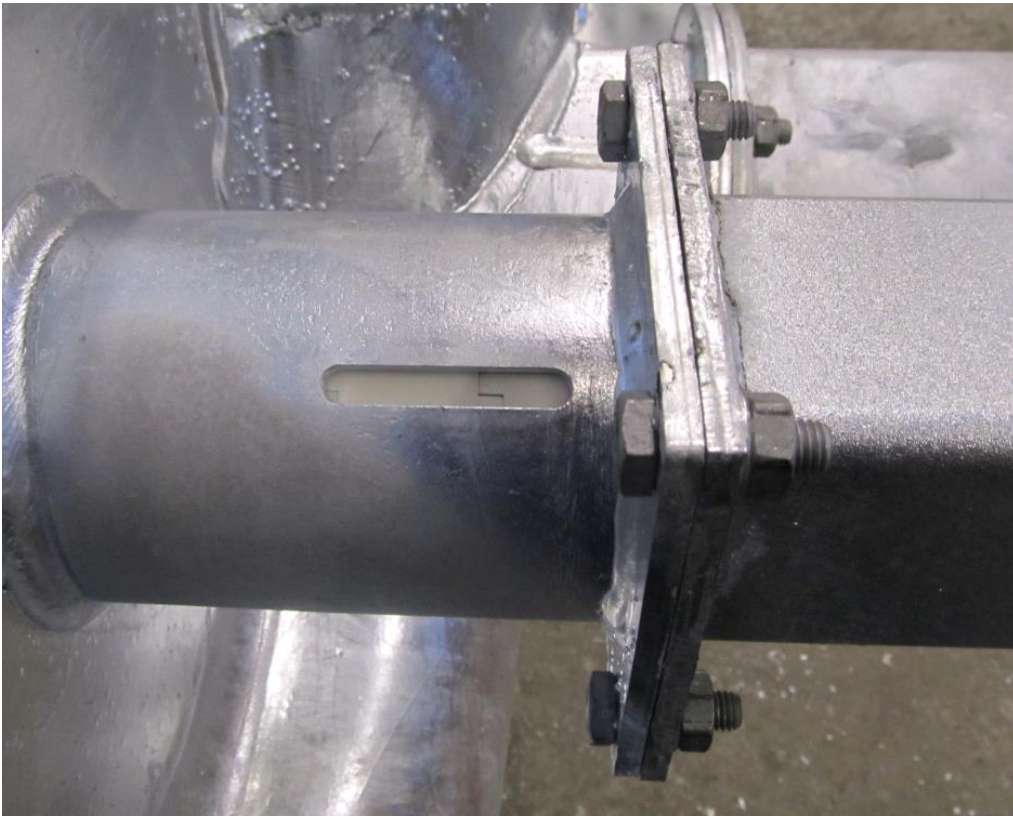
Solution

Replace the plastic bearings.

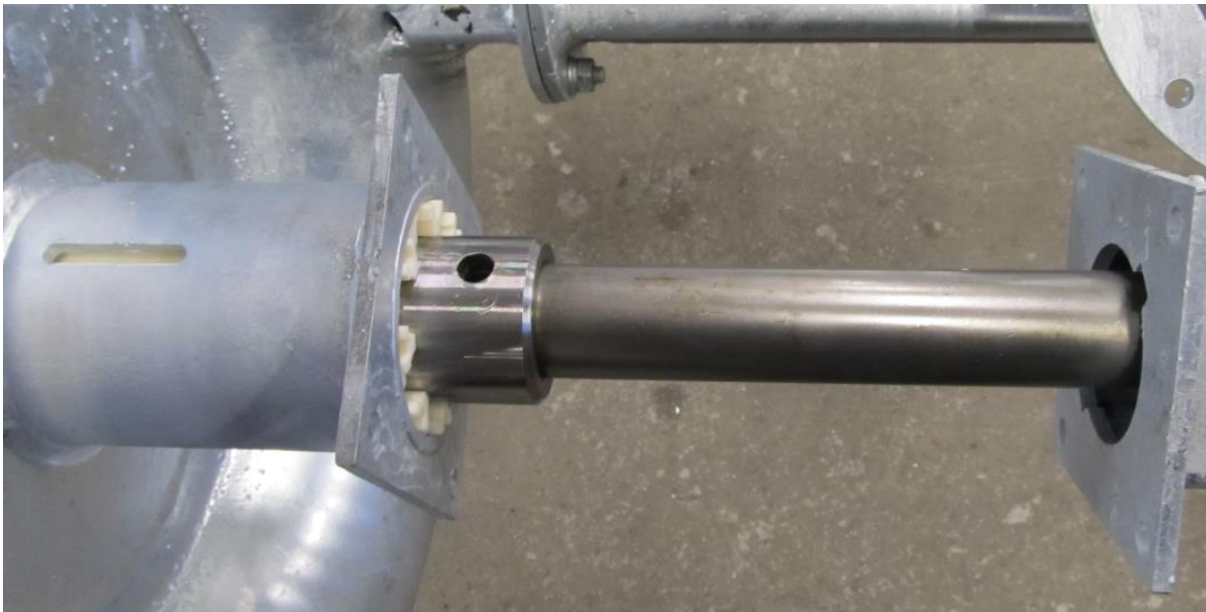
Release two set screws on the cover tube.



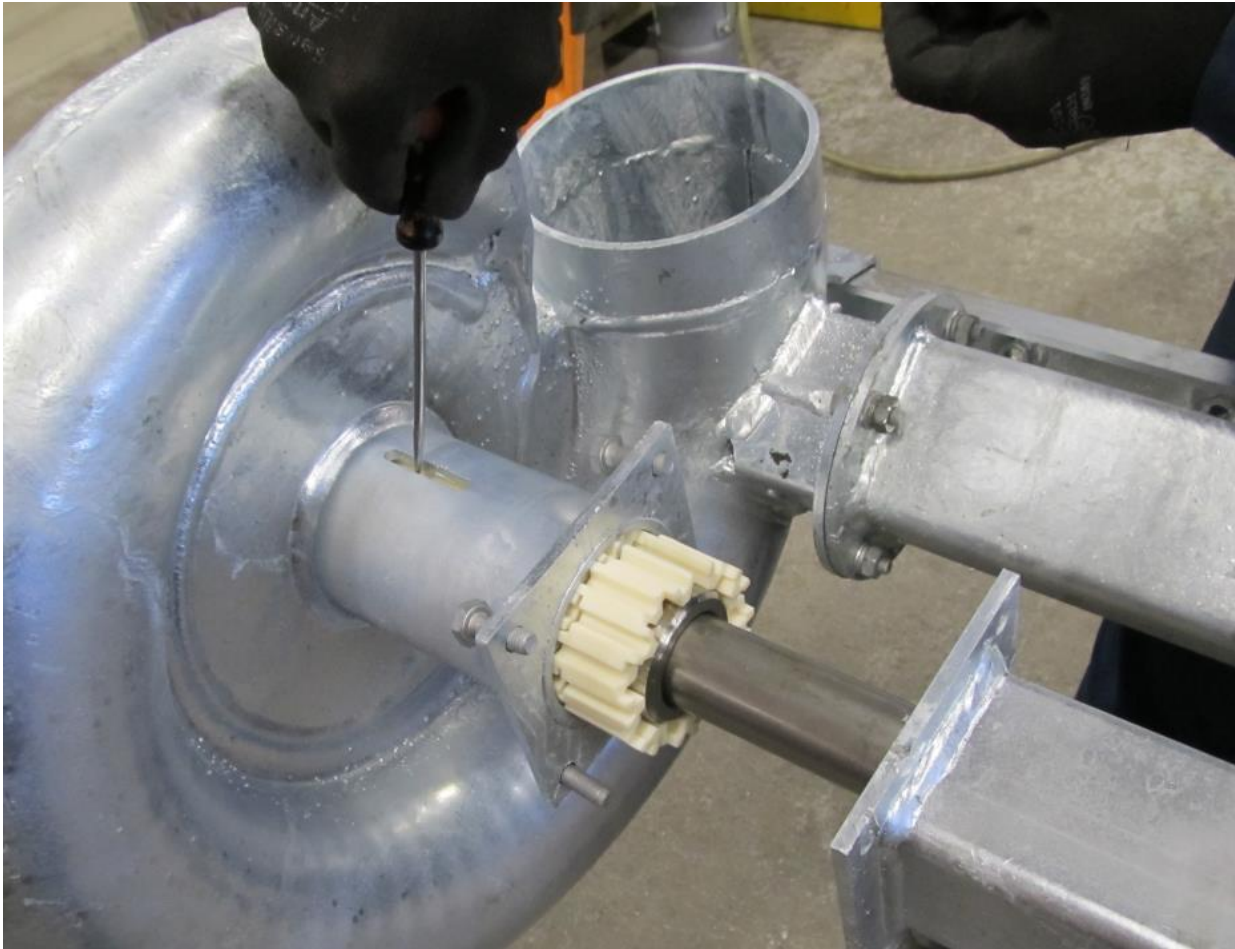
Release four screws that secure the cover tube to the pump housing.



Pull the cover tube away from the pump housing until the bearing comes out.



Use a screwdriver or similar tool and push out four plastic bearings. Remove them from the shaft.



Install four new plastic bearings. Bearings have an opening that they can be placed around the shaft. Assemble the pump by following the instructions in reverse order.